

## Installing the SPORTident USB to UART device driver on Windows x64 systems

The SPORTident USB to UART device driver is required for SPORTident base stations with USB interface and the SPORTident USB to RS232 adapter.

This document shows a step by step instruction on how to install the driver. Please be sure, that you already performed the following steps:

- Download the current SPORTident USB to UART driver from [www.sportident.com](http://www.sportident.com), section Support - Download - Software.
- Extract the downloaded ZIP file to a folder on your local computer, for example your desktop.

The following screenshot have been made on a German Windows 7 x64 operating system. The dialogs and click areas on English Windows 7 operating system are corresponding.

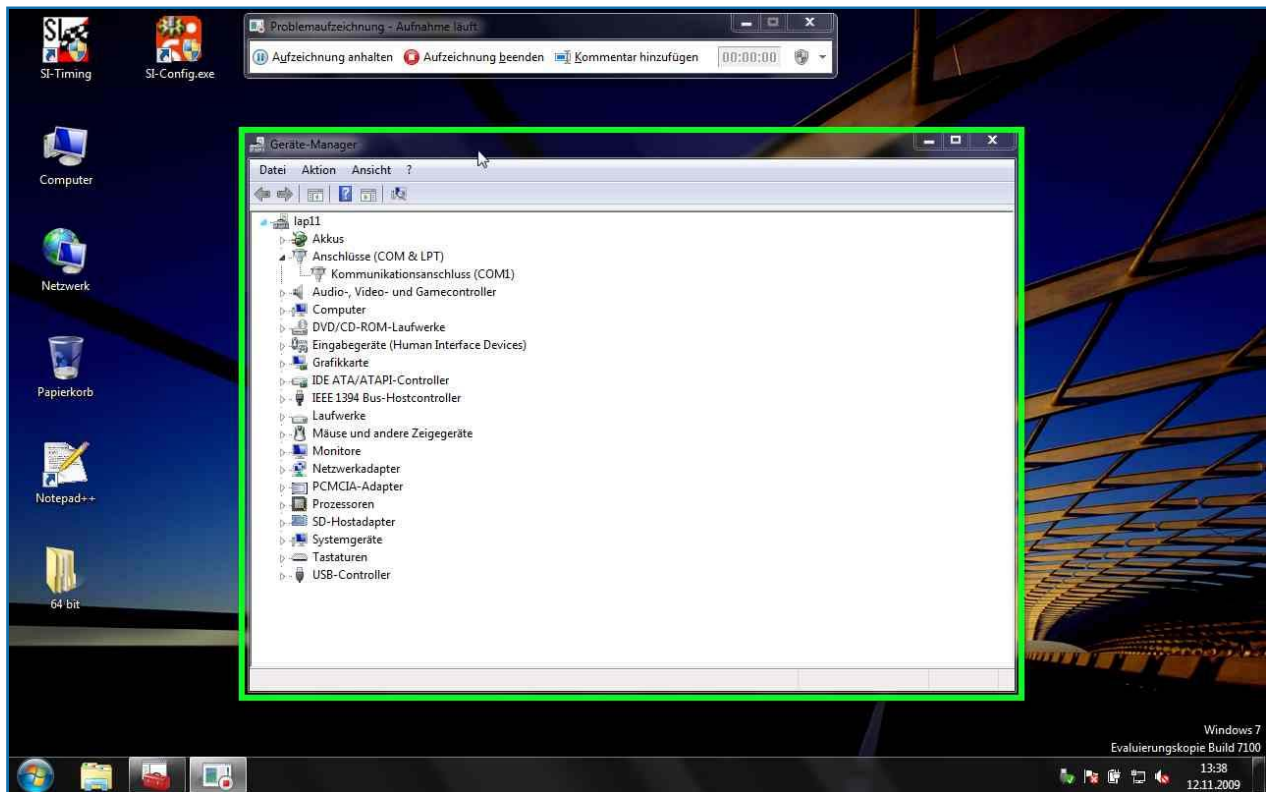
You can also choose to:

- [Show as a dia show](#)

## Steps

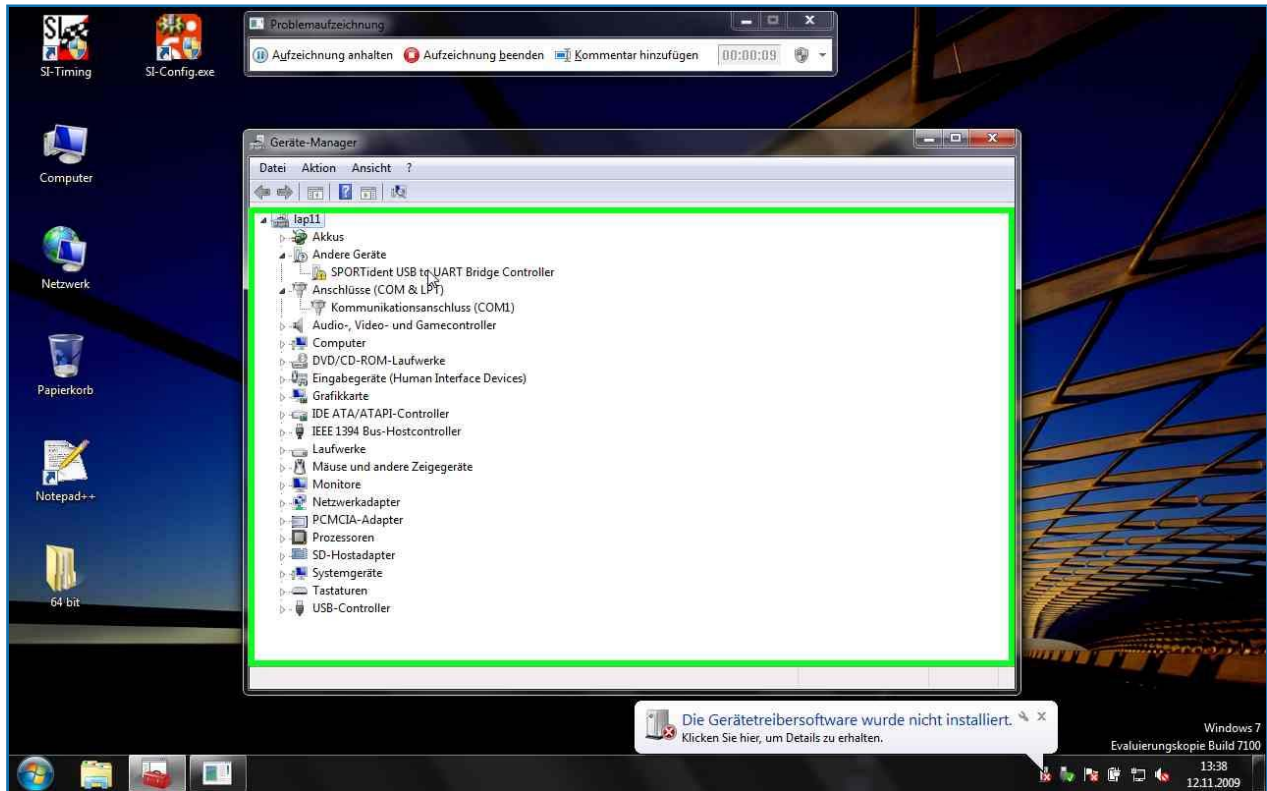
[Previous step](#) [Next step](#)

**Step 1:** Start the device manager.

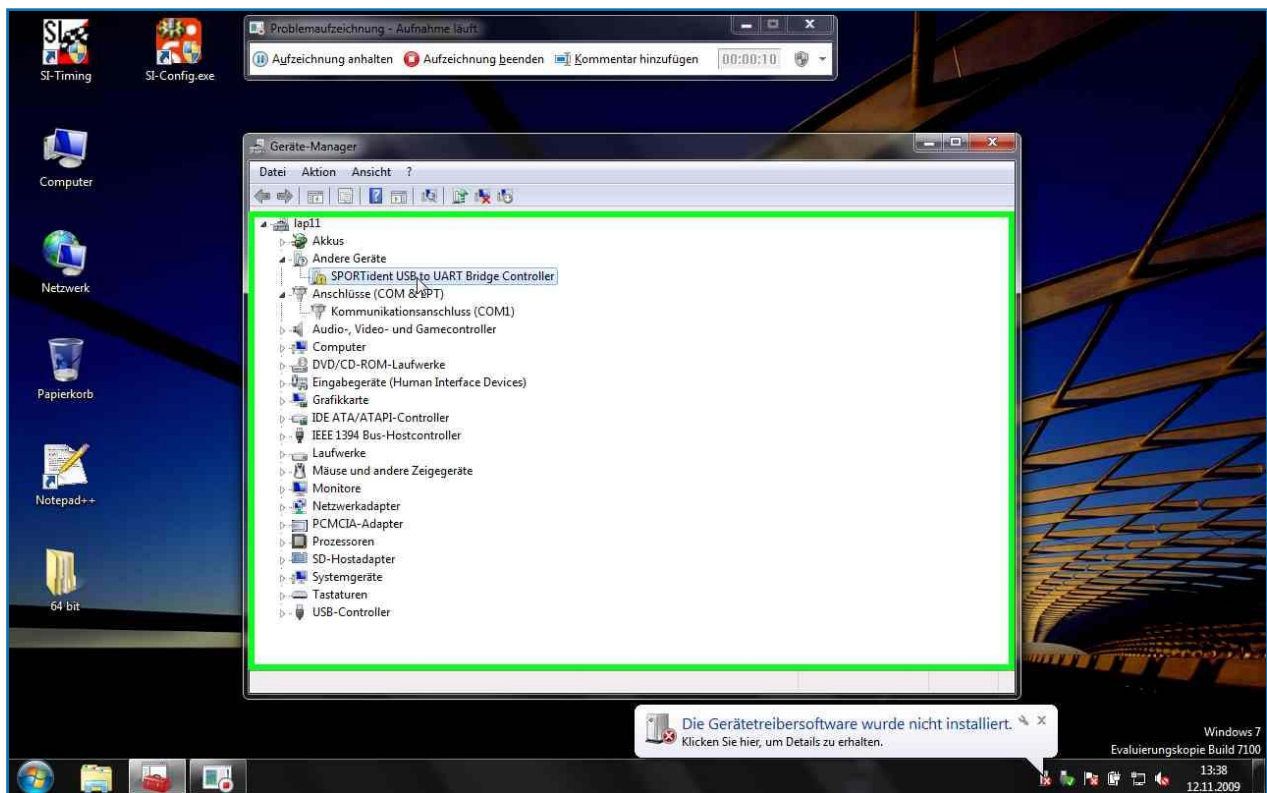


[Previous](#) [Next](#)

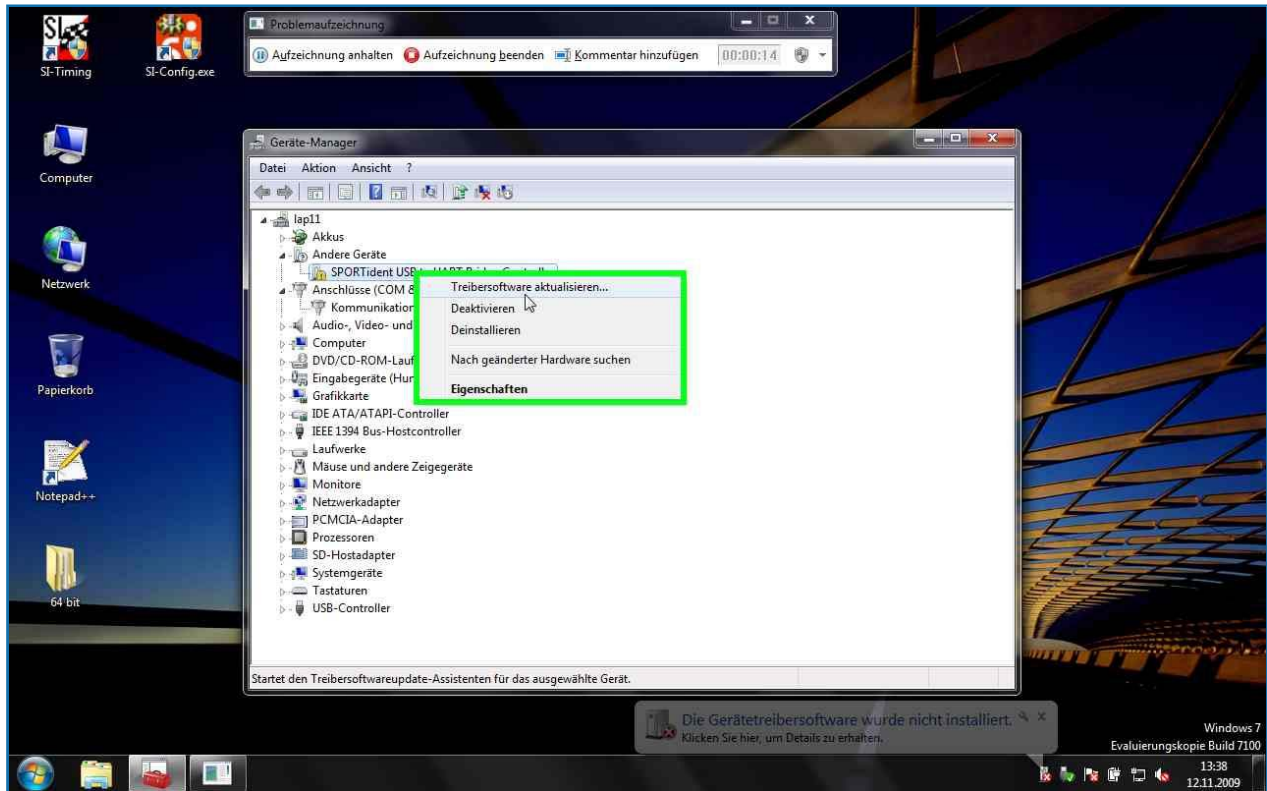
**Step 2:** Left-click on "SPORTident USB to UART Bridge Controller" in the device manager.

[Previous](#) [Next](#)

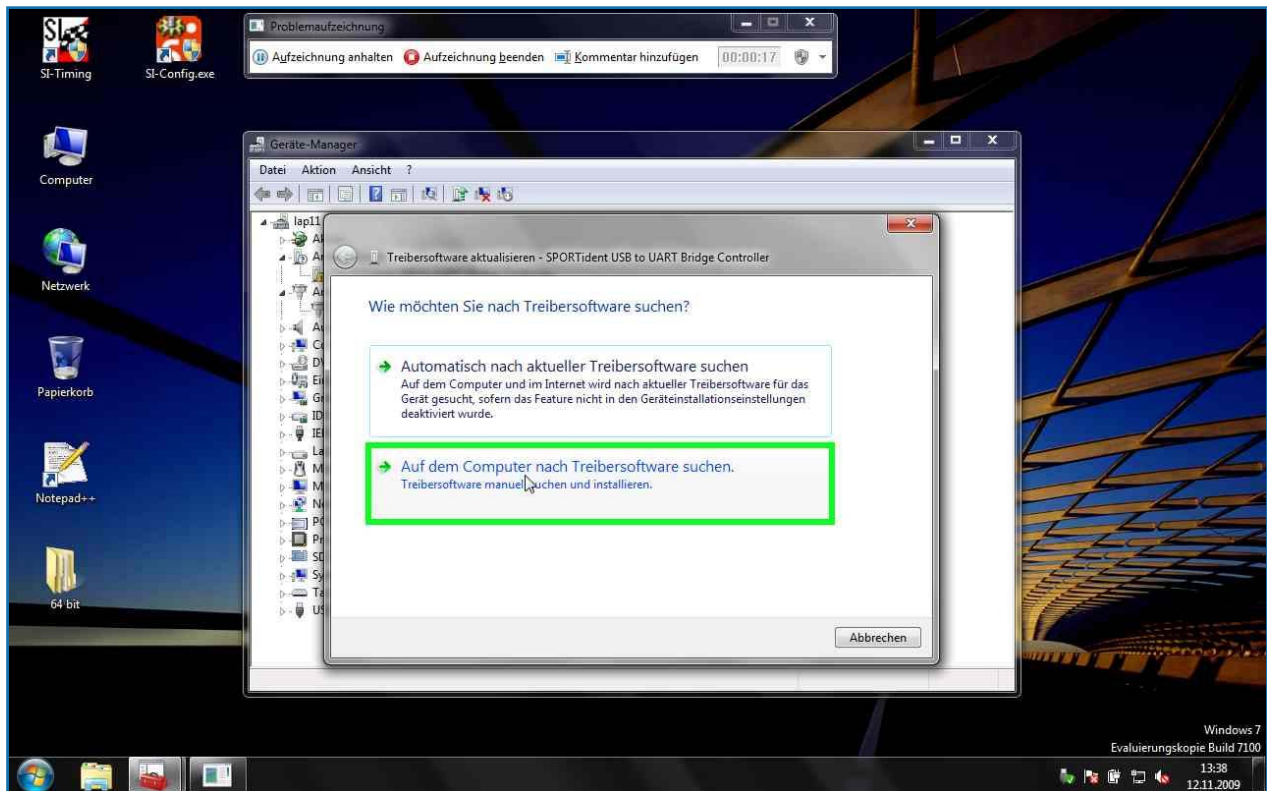
**Step 3:** Right-click on "SPORTident USB to UART Bridge Controller" in the device manager

[Previous](#) [Next](#)

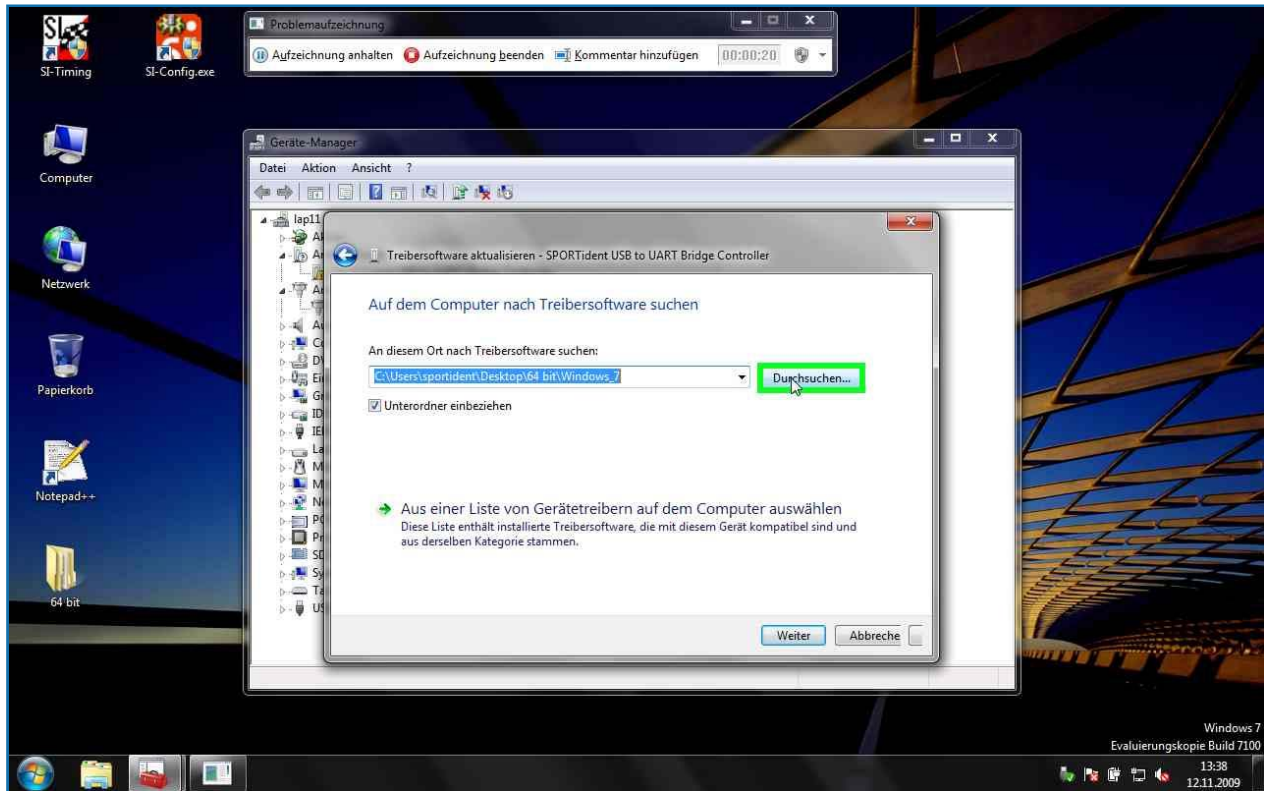
**Step 4:** Left-click on "Update device drivers..."

[Previous](#) [Next](#)

**Step 5:** Left-click on "Search for the device driver..."

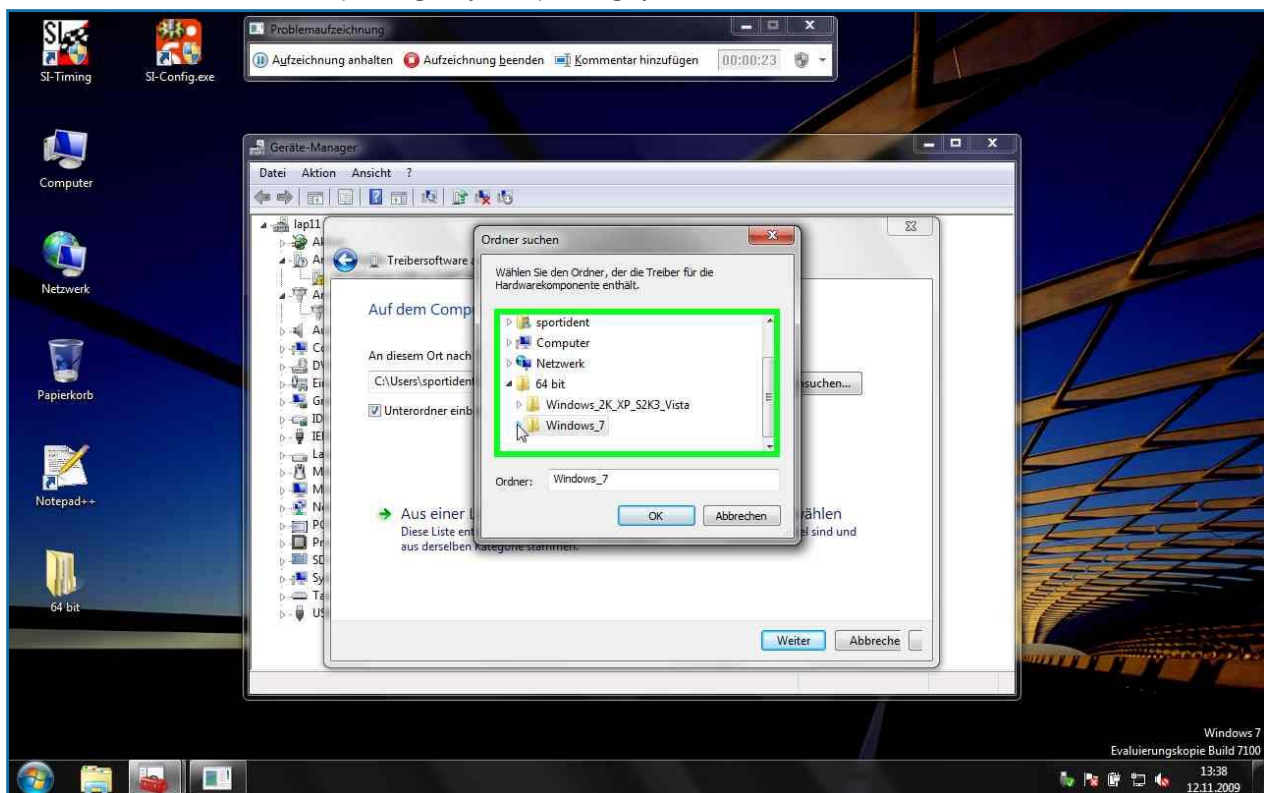
[Previous](#) [Next](#)

**Step 6:** Left-click on "Browse"



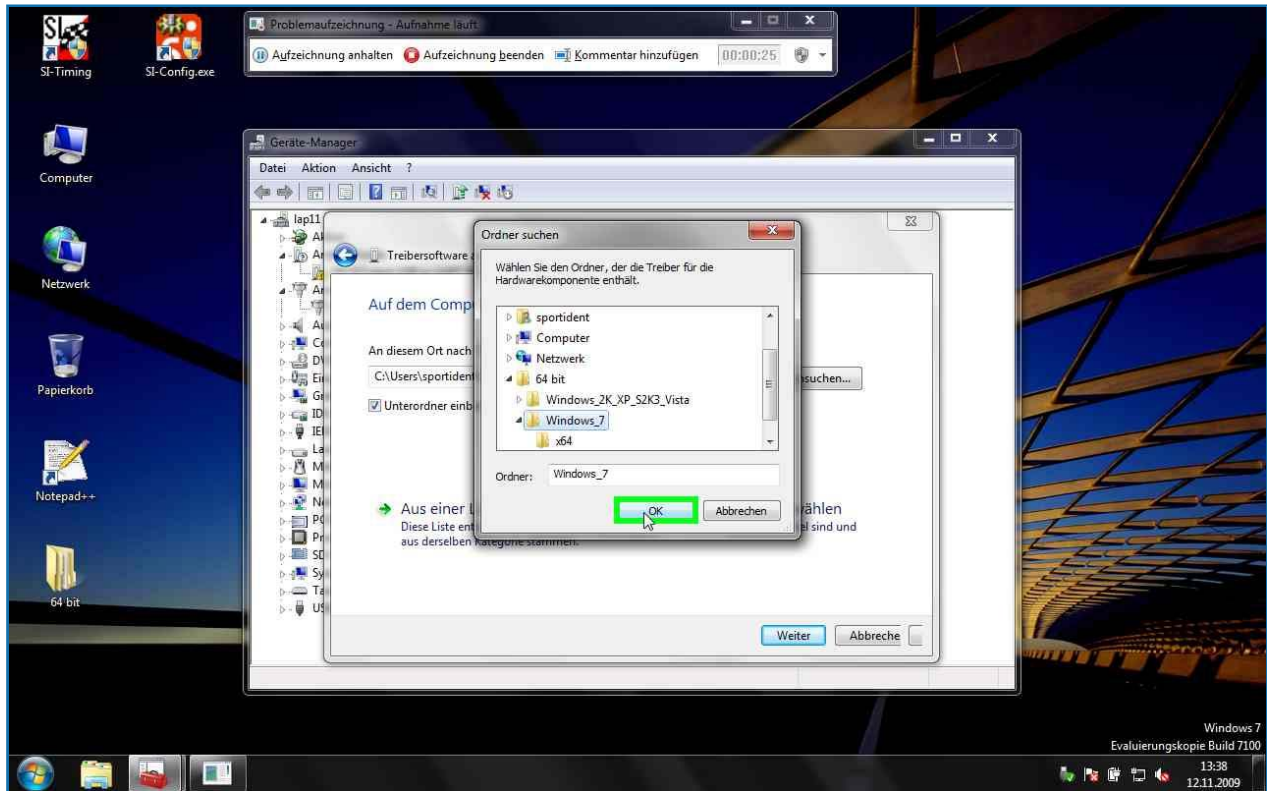
[Previous](#) [Next](#)

**Step 7:** Select the directory that contains the extracted driver files, then select the sub-directory "Windows\_7" or "Windows2k\_XP\_S2K3\_Vista" depending on your operating system.



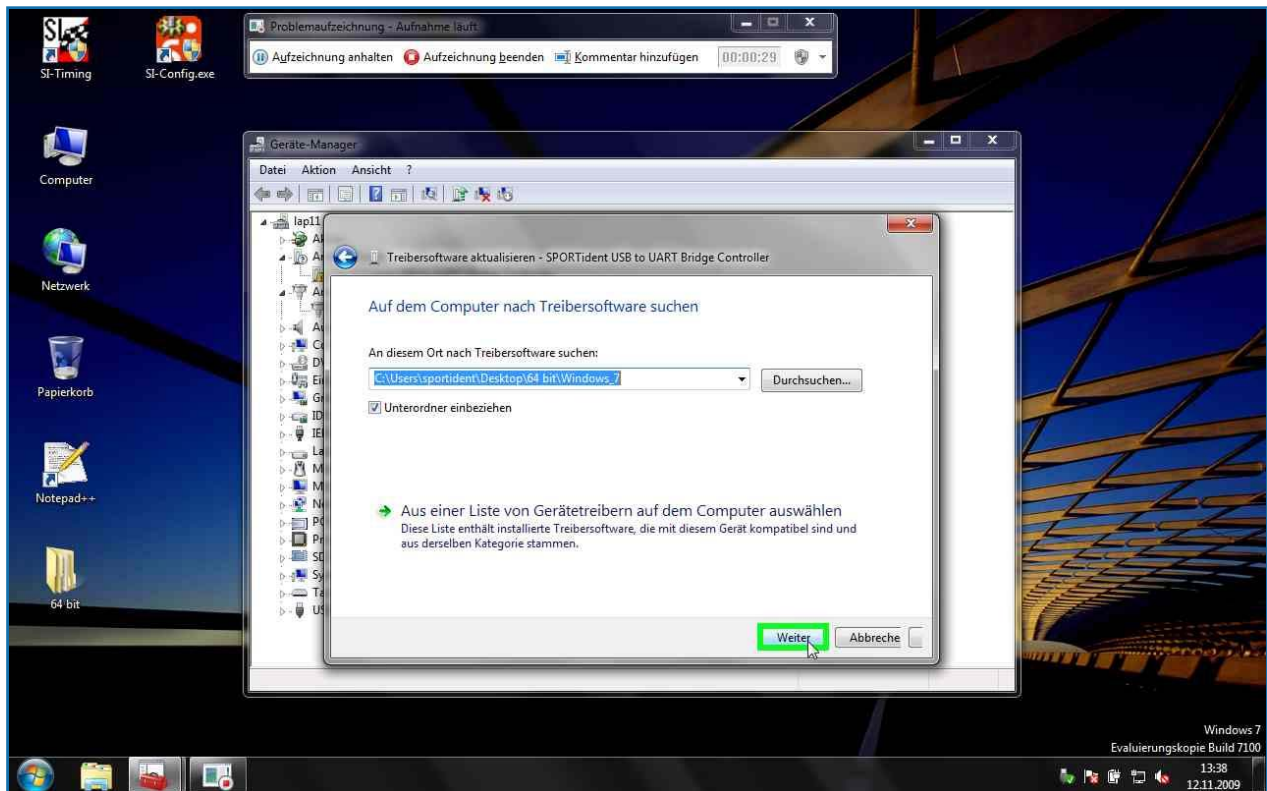
[Previous](#) [Next](#)

**Step 8:** Confirm your selection with OK.



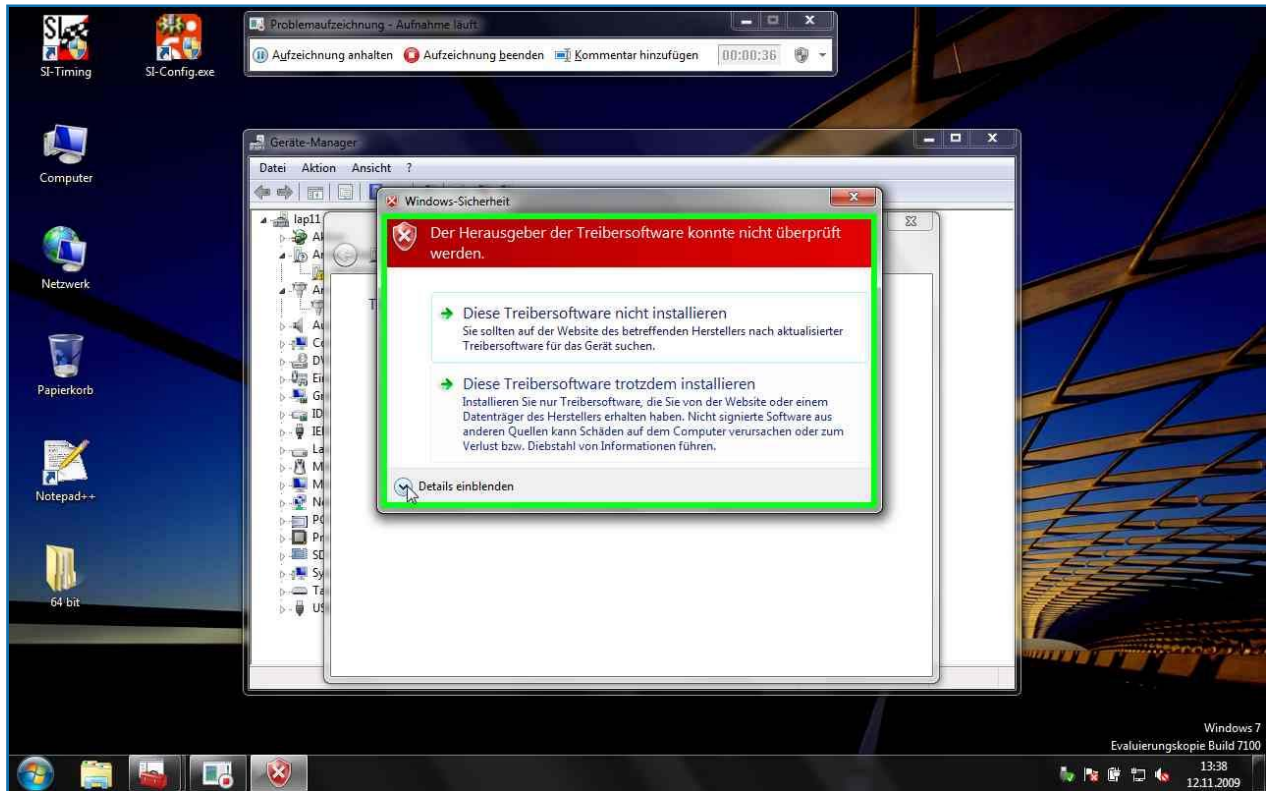
[Previous](#) [Next](#)

**Step 9:** Check the correctness of the selected folder and left-click on "Next"

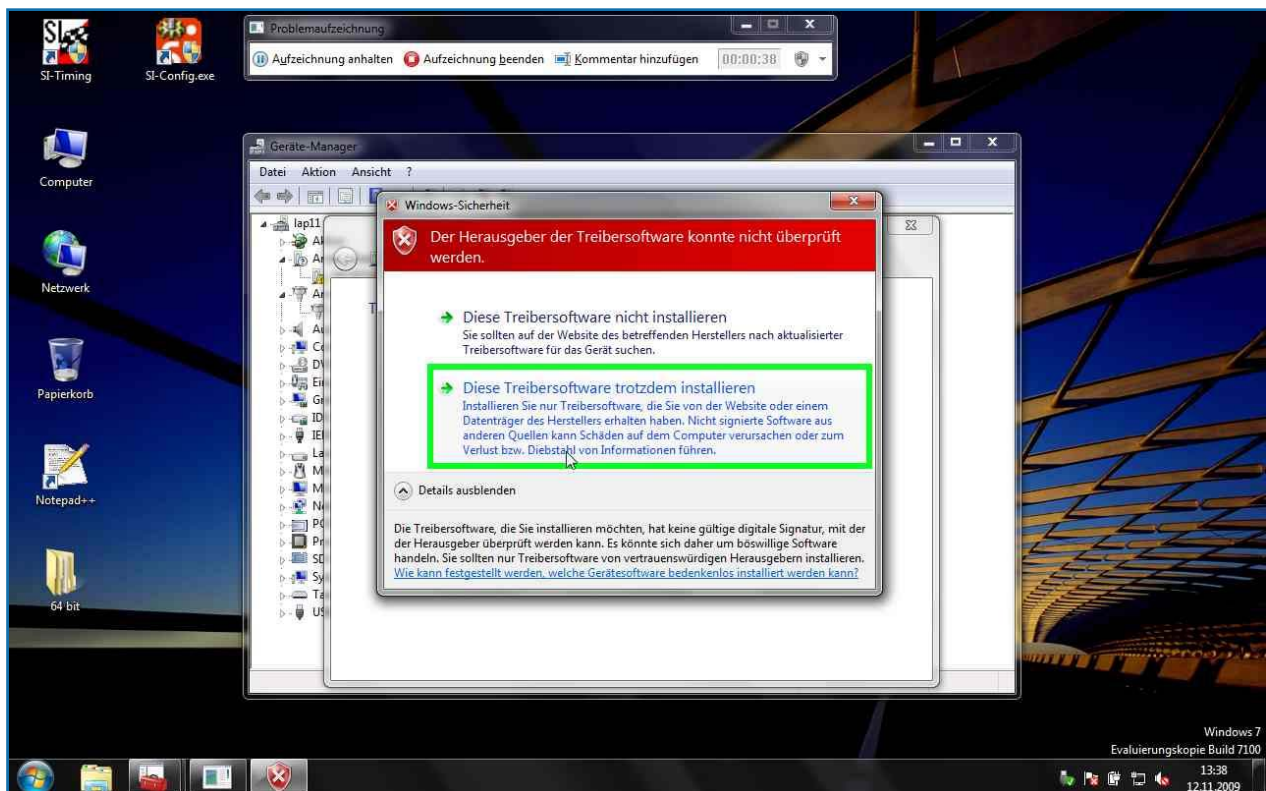


[Previous](#) [Next](#)

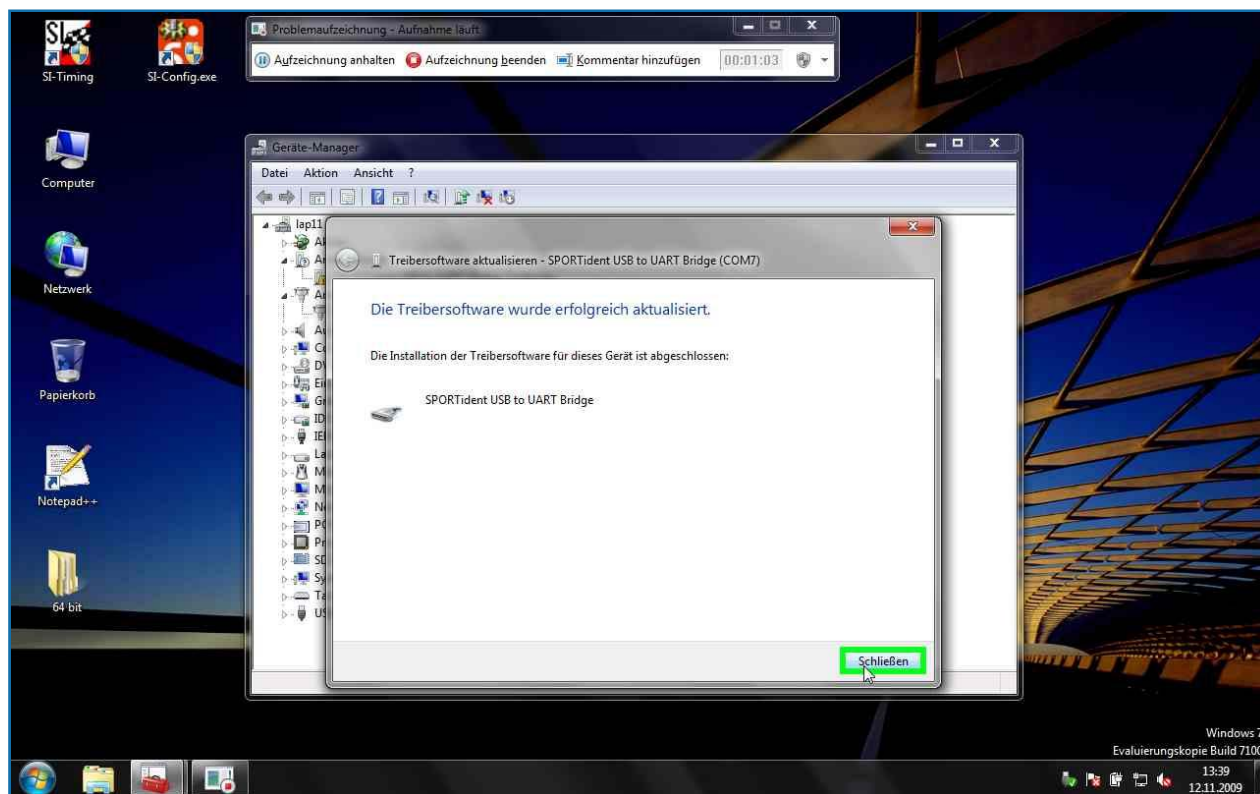
**Step 10:** A warning appears telling you that the publisher of the driver software could not be verified. This is due to an incorrect driver certificate. You can ignore this warning.

[Previous](#) [Next](#)

**Step 11:** Left-click on "Install this driver software anyway" to ignore the warning and install the driver.

[Previous](#) [Next](#)

**Step 12:** The driver is successfully installed. Left-click on "Close" to close the installation wizard dialog.



[Back to top...](#)

[Back to top...](#)